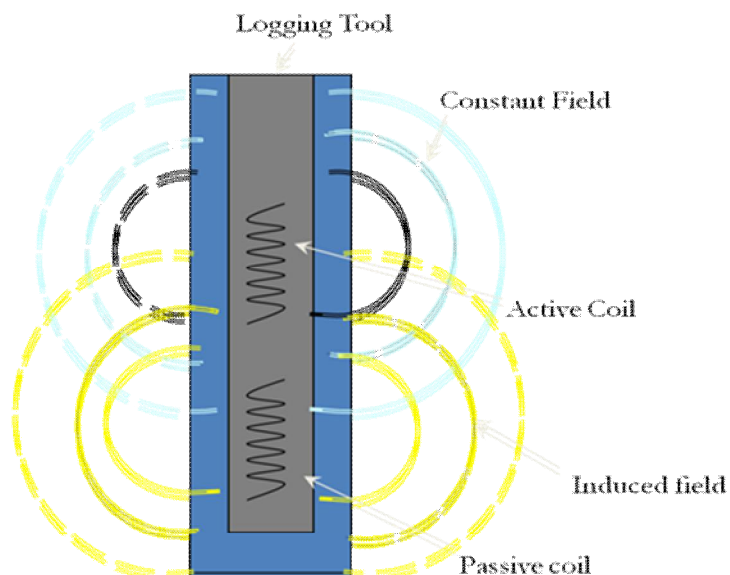


# Geovista Magnetic Susceptibility Tool



This is a two coil sonde designed to measure formation magnetic susceptibility in a wide range of formations. The Magnetic Susceptibility of the formation is how susceptible it is to becoming magnetised when subjected to an external magnetic field. The external field is provided by the active coil and the resulting induced field strength is read by the passive coil. The induced field strength is directly proportional to the susceptibility of the formation. Paramagnetic rocks results in a positive susceptibility or the induced field being greater than the applied field. Diamagnetic Formation types have the opposite effect resulting in a negative susceptibility. It is mainly used for exploration for deposits of Fe minerals – magnetite, pyrrhotite and haematite. It can identify formations containing magnetite from 0.005 to 100 % concentration.



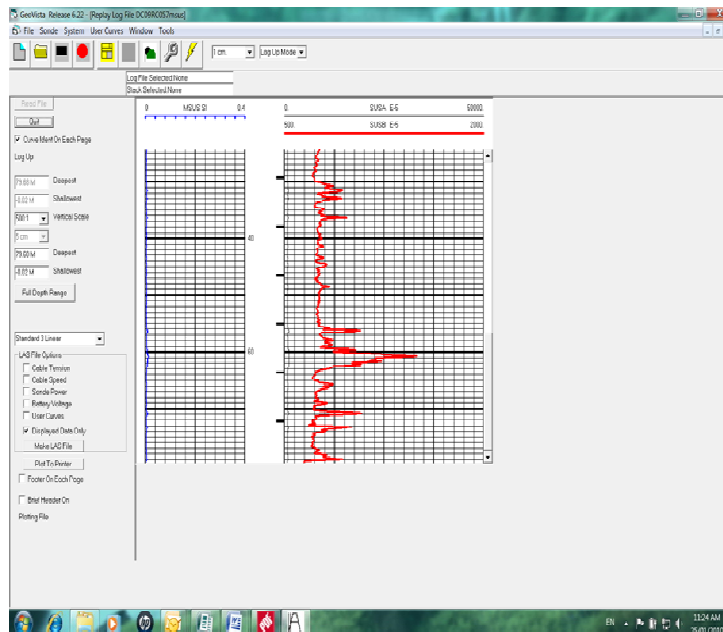
**Peter Bowman**  
Operations Manager  
ABIM Solutions  
130 Fauntleroy Avenue, Redcliffe  
WA 6104  
Mob: +61 4577 57194  
pbowman@abims.com.au  
[www.abims.com.au](http://www.abims.com.au)

# Geovista Magnetic Susceptibility Tool



## Specifications:

Length/Weight/Diameter:	<b>1.05m/4.0Kg/38mm</b>
Active Coil to Passive Coil Spacing:	<b>15cm</b>
Range :	<b>10-5 to 1 SI units</b>
Maximum Temperature:	<b>50°C</b>
Maximum Pressure:	<b>10 MPa</b>



**Peter Bowman**  
Operations Manager  
ABIM Solutions  
130 Fauntleroy Avenue, Redcliffe  
WA 6104  
Mob: +61 4577 57194  
pbowman@abims.com.au  
www.abims.com.au

